

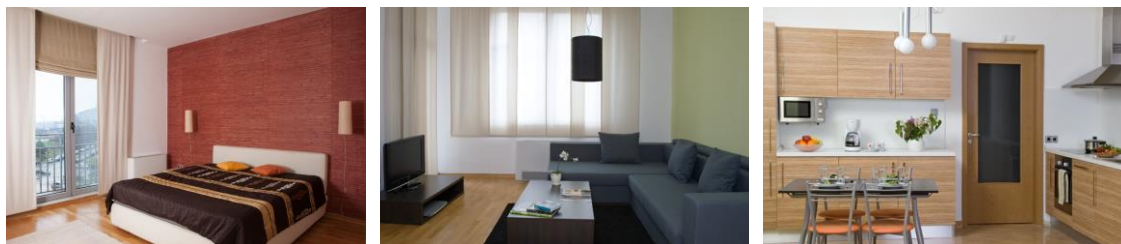
Cleves Embassy Suites is in a luxury gated community in south Sofia looking out to Vitosha mountain, with glorious Sofia apartments, landscaped gardens, and underground parking.



## Location

Manastirski Livadi's location puts Vitosha on our doorstep. Yet communications are terrific: an excellent road, plus direct tram links, gives speedy access to the centre of Sofia. Business Park Sofia and the Airport are also within easy reach.

- **By the mountain:** At the foot of Vitosha, with wonderful mountain views.
- **Tranquil:** Away from the noise of the City, yet only 10-15 minutes' drive from the Centre via Bulgaria Blvd.
- **Great neighbourhood:** Manastirski Livadi's rich facilities include supermarkets, banks, schools, kindergartens, and a hospital. The mall nearby offers 100+ shops and multiple cinema screens.
- **Restaurants:** Some of Sofia's finest restaurants are within a few minutes' drive, especially in Boyana.
- **Culture:** Boyana Church – a UNESCO World Heritage Site – is only 4 minutes' drive. The National Museum of History is only 3 minutes away.
- **Nature:** Vitosha National Park covers 278 sq km, and its lower slopes are covered in beech, birch, aspen and alder.



Cleves EOOD, 11 General Schteryu Atanasov Street, Sofia 1113, Bulgaria

Tel: +359 (0) 700 17 008 Email: [office@cleves.bg](mailto:office@cleves.bg)

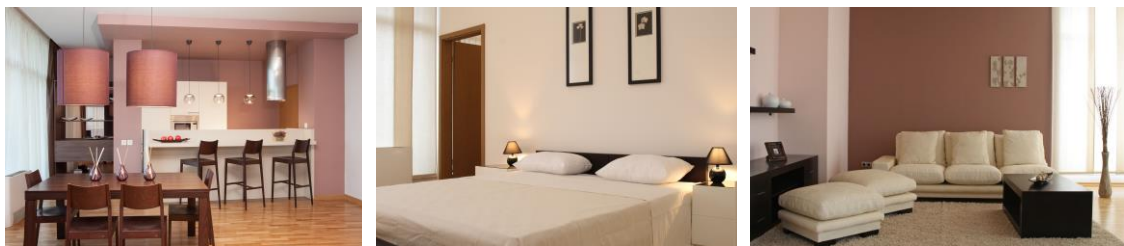
[Sofia apartments - www.cleves.bg](http://www.cleves.bg)



### **Designed by Cleves**

Our own team of interior designers designs every Cleves apartment. Embassy Suites units are unusually spacious, and we equip them with the top standards:

- All apartments fitted with security system.
- Apartments have extra-high 2.9m ceilings and floor-to-ceiling windows.
- Gas heating, and air-conditioning controllable from every room.
- All apartments have a utility room, and washing & drying machines.
- Spacious underground parking with automatic light sensors.
- Large glass elevator serving all apartments.
- Wide and spacious stairways & entrance areas.
- Main bedrooms have en-suite bathrooms.
- Wooden parquet floors throughout as well as TV with cable, Bosch kitchen equipment.
- Every apartment has an east-facing terrace and views of Vitosha.



### **Vitosha Mountain**

Vitosha is one of the symbols of Sofia and famous for its hiking and skiing. Its territory includes Vitosha national park - the oldest in the Balkans, created in 1934. Vitosha has beautiful peaks, thick woods, pure air, hundreds of km of well-marked tracks, numerous lodging places and restaurants.